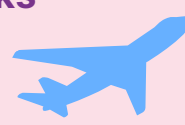
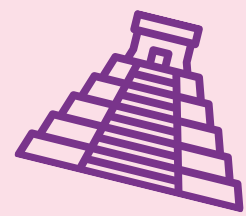
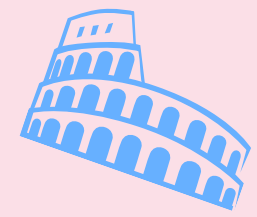


Region International Trip Road Map



18-9 months Permission to Plan
Needs to be sent to **Region International Team & Region Chief** for approval. Copy in your County Commissioner & County International Adviser

Agree/Approve Deadlines
Residential Event Notification (REN), Covid checks, Risk Assessment (RA), payment schedule, insurance & spreadsheet needed (for all the participant info for the trip)

Insurance
Needs to be in place before any costs are paid
Girls provided forms (signed T&Cs, medical information and deposit)

Qualifications
Everyone to have/gain required qualifications:
- 1st Response
- DBS
- A Safe Space
- Travel Abroad,
- Section Leadership,
- Section Going Away
With

REN
To be signed off

Finances
Finalise accounts 0 balance

18 months

12 months

9 months

8 weeks

4 weeks

6 Weeks After

T&Cs
T&Cs letter, checklist, package allowance, activities etc

REN
Should be updated at any point to detail any changes and resubmitted

REN & RA
To be submitted to **Region International Team & Region Chief** including home contact details

Review
Medical Form

TRIP!!!

Feedback
From participants and leaders to help plan future trips