



# Level 2 Walking Training/Assessment weekend

## Friday 20 - Sunday 22 April 2018

**DEADLINE 5  
APRIL 2018**

### What's it about?

We're inviting our adult members to take part in our walking weekend. This opportunity is perfect for those who want to receive training for their Level 2 walking scheme, or those who would like to be assessed for their Level 2 walking scheme. We will be running both sessions parallel to each other.

### Approved Level 2 walking scheme training

The Level 2 training course is aimed at adults wishing to extend their existing navigational skills, to learn how to lead groups safely in open country, and work towards gaining a walking qualification. The course will include practical and theoretical sessions on:

- Route planning
- Group management
- Navigation (including night navigation)
- Equipment and food
- Emergency scenarios
- Hazards and weather
- Access and conservation

### Approved Level 2 Walking Scheme assessment

The Level 2 assessment course is aimed at adults who have already attended a Level 2 training course. Participants will be assessed on all aspects of the Level 2 training. Experience of walking in open country is required.

It is an essential requirement for those completing the assessment to submit a logbook of walks by **Thursday 5 April** to Region HQ. These can be posted to Girlguiding North West England, Guiding Road, Preston, PR2 5PD or emailed to [northwesthq@girlguidingnwe.org.uk](mailto:northwesthq@girlguidingnwe.org.uk)

### Essential information

**Date** - Friday 20 - Sunday 22 April 2018

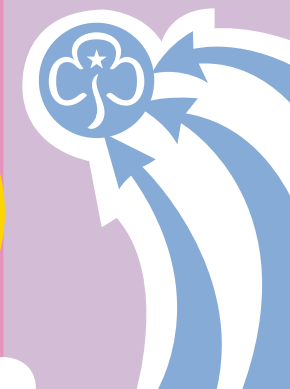
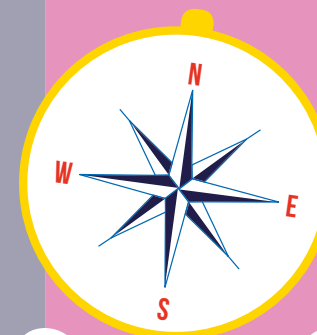
**Time** - Arrival from 6:00pm on the Friday and departure 4:00pm on the Sunday

**Where** - Park House Scout and Guide Accommodation, 34 Main Street, Hawkshead, Cumbria, LA22 0NT

**Cost** - £50.00

**Meals** - Meals will be provided from Friday evening meal, until Sunday lunch.

**Don't forget to bring** - We will provide a full kit-list and more information closer to the weekend.



## How to apply

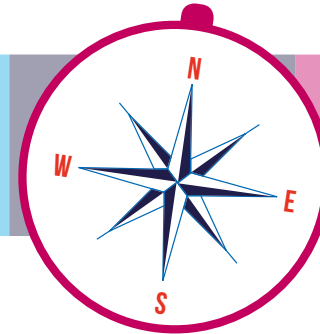
Please let your County Commissioner know that you are attending the event. Complete the booking form below, and send it together with a cheque for the full amount (£50.00) to:

Girlguiding North West England, Guiding Road, Preston, PR2 5PD

Please make cheques payable to 'The Guide Association NWE'

Closing date for bookings: **Thursday 5 April 2018**

\*Payments for this event are regrettably non-refundable. However if for any reason the event is cancelled a full refund will be provided.



**BOOK  
NOW!**

## Application Form - Level 2 Walking Training/Assessment weekend

Please select one of the following walking programme options:

Level 2 training     Level 2 assessment

Name: .....

Membership No: .....

County: .....

Tel: .....

Email: .....

Any special dietary, mobility or sensory requirements? .....

.....

